

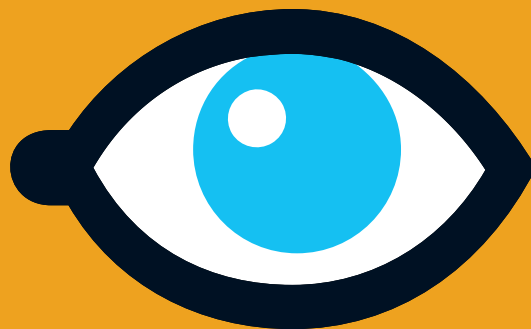
# How to Make an Environmental Complaint

This leaflet explains who you should contact and what you can do to help resolve environmental problems

- A. Who to Contact
- B. What to Say and Do
- C. Directory of Relevant Agencies



Environmental  
Enforcement  
Network



**SEE SOMETHING?**

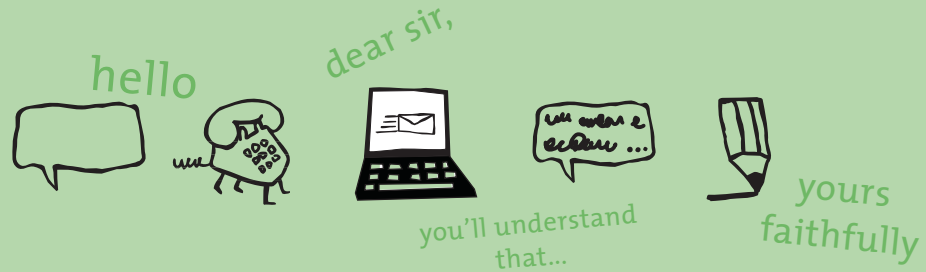
**SAY SOMETHING!**



PART

A

# Who to Contact



## Step One

### Contact the Person or Business Directly

In many cases, it will be possible to resolve an environmental problem by contacting the person or business that you think is causing the problem directly. If you would prefer not to take this option, please move on to Step Two.

If you do contact the person or business directly, it is best to decide before you make contact what outcome you would like to see. Then contact them directly, by phone or in writing and outline the issue that needs to be resolved, how you would like to see it resolved and agree a timescale for this to be achieved.

*Some areas, like*

- *wildlife & habitat protection,*
- *workplace health & safety, and*
- *public health*

*are the responsibility of specific public bodies. Contact details for these public bodies and information on the issues they are responsible for can be found at the back of this leaflet.*

*Rather than go through this complaints process you have the option of bringing your own actions under many sections of environmental law. ENFO has produced a leaflet, "Citizen's Role as Enforcer of Environmental & Planning Law", which explains this. ENFO can be reached on LoCall 1890 200 191 or [www.enfo.ie](http://www.enfo.ie).*

## Step Two

### Contact the Local Authority

CONTACT DETAILS PAGE 6

If the first step in the process has not produced a satisfactory result, please contact your local authority *except where your concern is about a business with an EPA licence.*

*The EPA licences large industry or large waste management facilities such as landfills. In this case, please move to Step Three.*

So, where the problem relates to matters like littering, backyard burning, water pollution, noise, dust and smells you should be contacting the local authority, *unless the business has an EPA licence.*



## Step Three

### Contact the Environmental Protection Agency (EPA)

CONTACT DETAILS PAGE 11

If you've been dealing with an EPA licensed site and the problem has not been resolved then you should contact the EPA.

Also, in cases where a local authority has investigated your complaint and the problem persists, please contact the EPA. The EPA will then investigate the issue and resolve it where possible.

It is important to note that the EPA will not become involved in investigating an issue that should be resolved by a local authority, until the relevant local authority has been given an opportunity to investigate and resolve the issue.

When you are seeking to resolve an environmental problem, whether you are at Step 1, 2 or 3, keep the following things in mind.

### Keep a record

If you have chosen to get in contact by phone, it is good practice to take note of the date and time of the call, the name of the person you spoke to, the main points of the conversation, what actions have been undertaken by the person contacted and by yourself. Where further calls are made the same information should be taken and retained.



24th April 11am  
mr sampleman  
check  
follow up with...

### Details are important

Give as much detail as possible –

**Who? What? When? Where? !!**

### Follow up



You may wish to follow up any phone calls in writing or by e-mail. If so, make sure you keep a copy of any correspondence. This information may be useful in later steps of the process.

### On-line form



You can also use the **Environmental Complaint Form** available on the local authority's or EPA website and also at the local authority or EPA offices. Contact details, including website addresses, for all local authorities and the EPA can be found at the back of this leaflet. Again, please remember to keep a copy of all correspondence.

## Keeping abreast of progress

When you make a complaint, you will be told how your complaint will be dealt with. Some problems can be resolved quickly. However, some environmental problems by their nature can take a considerable amount of time to resolve. If you would like to hear more about progress on your complaint, please contact the relevant local authority or EPA office where you lodged your complaint.

## Confidentiality

To progress its investigation the local authority or the EPA will, in many cases, need to be able to contact you for further information or assistance.

You will be encouraged to give your name and contact details, as investigating anonymous complaints can be very difficult. You can request that your name and contact details be kept confidential.

In order to maintain a complete public record of activities relating to an EPA licensed facility/site, it is normal practice that complaint details about licensed facilities are put on public file. Again, you can request that your name and contact details be kept confidential in which case your name and details will be withheld from the public file.



Please note that information submitted to public bodies is subject to the provisions of the Freedom of Information Acts 1997 and 2003.

## Your role as a witness

Finally, in some instances it may be necessary that a court action be taken to resolve a problem. If this is the case you may be asked to act as a witness and to give sworn testimony.

PART



# Directory of Regional Agencies

LOCAL AUTHORITIES

## Local Authorities

### Environmental Complaints Carlow County Council

Athy Road, Carlow

**Tel** +353 59 9136282

+353 59 9136281

+353 59 9136222

+353 59 9136226

**Fax** +353 59 9138098

**Email** [enviro@carlowcoco.ie](mailto:enviro@carlowcoco.ie)

**Website** [www.carlow.ie](http://www.carlow.ie)

**Litter Hotline** 1800 308 208

### Environmental Complaint Coordinator

Environment Section

### Cavan County Council

Courthouse, Cavan

**Tel** +353 49 4371429

**Fax** +353 49 4371423

**Email** [epc@cavancoco.ie](mailto:epc@cavancoco.ie)

**Website** [www.cavancoco.ie](http://www.cavancoco.ie)

### Environmental Complaints Coordinator

### Clare County Council

Environment and Emergency  
Services Directorate

Block B, IAPE Building, Gort Road

Ennis, Co Clare

**Tel** +353 65 6846331

**Out of Hours** 1800 606 706

**Fax** +353 65 6846444

**Email** [enviroff@clarecoco.ie](mailto:enviroff@clarecoco.ie)

**Website** [www.clare.ie](http://www.clare.ie)

### Administrative Officer Complaints Environmental Directorate

### Cork County Council

Inniscarra, Co Cork

**Tel** +353 21 4532700

**Out of Hours** +353 21 4821433

**Fax** +353 21 4532727

**Email** [environmental.complaints@corkcoco.ie](mailto:environmental.complaints@corkcoco.ie)

**Website** [www.corkcoco.ie](http://www.corkcoco.ie)

### Administrative Officer Environment Cork City Council

Floor 3, Norwich Union House

89/90 South Mall, Cork

**Tel** +353 21 4966222

**Fax** +353 21 4924054

**Email** [environment@corkcity.ie](mailto:environment@corkcity.ie)

**Website** [www.corkcity.ie](http://www.corkcity.ie)

### Environment Section

### Donegal County Council

County House

Lifford, Co Donegal

**Tel** +353 74 9172222

**Out of Hours** +353 74 9172399

**Fax** +353 74 9141205

**Email** [environment@donegalcoco.ie](mailto:environment@donegalcoco.ie)

**Website** [www.donegalcoco.ie](http://www.donegalcoco.ie)

### Customer Services Centre

### Dublin City Council

Civic Offices, Dublin 8

**Tel** +353 1 2222222

**Email** [info@dublincity.ie](mailto:info@dublincity.ie)

**Website** [www.dublincity.ie](http://www.dublincity.ie)

Environmental Complaints  
Coordinator  
Enforcement Section  
Environmental Services  
Department  
**Dún Laoghaire Rathdown  
County Council**

County Hall, Marine Road  
Dún Laoghaire, Co Dublin

**Tel** +353 1 2047954  
**Out of Hours** +353 1 6778844  
**Fax** +353 1 2300125  
**Email** wasteenforcement@  
dlrcoco.ie  
**Website** www.dlrcoco.ie  
**Litter Hotline** 1800 403 503

Administrative Officer  
Enforcement Section  
Environment Department  
**Fingal County Council**  
PO Box 174, County Hall  
Swords, Fingal, Co Dublin

**Tel** +353 1 8905013  
+353 1 8906274  
**Out of Hours** +353 1 8731415  
**Fax** +353 1 8906270  
**Email** envserv@fingalcoco.ie  
**Website** www.fingalcoco.ie  
**Litter Hotline** 1800 201 093

Environment Section  
**Galway City Council**  
City Hall, College Road  
Galway

**Tel** +353 91 536563  
+353 91 536595 Helpline  
**Fax** +353 91 568146  
**Email** environment@galwaycity.ie  
**Website** www.galwaycity.ie

Environmental Complaints  
Coordinator  
Environment Section  
**Galway County Council**  
Áras an Chontae  
Prospect Hill, Galway

**Tel** +353 91 509302  
**Out of Hours** +353 91 585555  
**Fax** +353 91 509033  
**Email** environ@galwaycoco.ie  
**Website** www.galway.ie

Administrative Officer  
Environment Section  
**Kerry County Council**  
County Buildings  
Rathass, Tralee, Co Kerry

**Tel** +353 66 7183562  
Litter Complaints  
+353 66 7162000 Waste &  
Pollution Complaints  
**Fax** +353 66 7120927  
**Email** environ@kerrycoco.ie  
**Website** www.kerrycoco.ie  
**Litter Hotline** 1800 326 228

Administrative Officer  
Environment Section  
**Kildare County Council**  
Áras Chill Dara  
Devoy Park, Naas  
Co Kildare

**Tel** +353 45 980588  
**Out of Hours** 1890 500 333  
**Fax** +353 45 980587  
**Email** environ@kildarecoco.ie  
**Website** www.kildare.ie  
**Litter Hotline** 1800 243 143

Environmental Complaints  
Coordinator  
**Kilkenny County Council**  
County Hall, John Street  
Kilkenny City

**Tel** +353 56 7794470  
**Out of Hours** +353 56 7794400  
**Fax** +353 56 7794004  
**Email** environment@  
kilkennycoco.ie  
**Website** www.kilkennycoco.ie  
**Litter Hotline** 1800 200 156

Administrative Officer  
Environment Section  
**Laois County Council**  
Áras an Chontae  
JFL Avenue, Portlaois  
Co Laois

**Tel** +353 57 8674318  
**Fax** +353 57 8674382  
**Email** environmentadmin@  
laoisccoco.ie  
**Website** www.laois.ie  
**Litter Hotline** 1800 32 32 30

Environmental Complaints  
Coordinator  
**Leitrim County Council**  
Áras an Chontae  
Carrick on Shannon  
Co Leitrim

**Tel** 1890 205205  
**Fax** +353 71 9621982  
**Email** environmentalcomplaints@  
leitrimcoco.ie  
**Website** www.leitrimcoco.ie  
**Litter Hotline** 1890 205 205

PART



# Directory of Regional Agencies

LOCAL AUTHORITIES

## Local Authorities contd

Administrative Officer  
Environment Department  
**Limerick City Council**  
City Hall, Merchant's Quay  
Limerick

**Tel** +353 61 407190  
**Out of Hours** +353 61 417833  
**Fax** +353 61 418345  
**Email** [environ@limerickcity.ie](mailto:environ@limerickcity.ie)  
**Website** [www.limerickcity.ie](http://www.limerickcity.ie)  
**Litter Hotline** 1800 216 816

Administrative Officer  
Environment Section  
**Limerick County Council**  
Floor 3 County Hall  
Dooradoyle  
Co Limerick

**Tel** +353 61 496264  
**Fax** +353 61 496008  
**Email** [environ@limerickcoco.ie](mailto:environ@limerickcoco.ie)  
**Website** [www.limerickcoco.ie](http://www.limerickcoco.ie)  
**Litter Hotline** 1800 201 151

Environmental Complaints  
Coordinator  
**Longford County Council**  
Áras an Chontae  
Great Water Street, Longford  
County Longford

**Tel** +353 43 43468  
1850 434 450  
**Fax** +353 43 43439  
**Email** [environmental.complaints@longfordcoco.ie](mailto:environmental.complaints@longfordcoco.ie)  
**Website** [www.longfordcoco.ie](http://www.longfordcoco.ie)  
**Hotline** 1850 434 450

Senior Staff Officer  
Environment Section  
**Louth County Council**  
County Hall  
Millennium Centre  
Dundalk, Co Louth

**Tel** +353 42 9353130  
**Out of Hours** +353 42 9335457  
**Fax** +353 42 9353196  
**Email** [environment@louthcoco.ie](mailto:environment@louthcoco.ie)  
**Website** [www.louthcoco.ie](http://www.louthcoco.ie)  
**Litter Line** 1800 202 606

Environmental Complaints Officer  
**Mayo County Council**  
Áras an Chontae  
Castlebar, Co Mayo

**Tel** +353 94 9024444 Ext 7442  
**Fax** +353 94 9028445  
**Email** [bwalshe@mayococo.ie](mailto:bwalshe@mayococo.ie)  
**Website** [www.mayococo.ie](http://www.mayococo.ie)  
**Litter Hotline** 1800 400 256

Senior Executive Officer  
Environment Section  
**Meath County Council**  
County Hall, Navan, Co Meath

**Tel** +353 46 9097204  
+353 46 9097205  
+353 46 9097206  
+353 46 9097207  
**Out of Hours** 1890 445 335  
+353 46 9097001  
**Email** [environment@meathcoco.ie](mailto:environment@meathcoco.ie)  
**Website** [www.meath.ie](http://www.meath.ie)  
**Litter Hotline** 1890 228 466

Administration Officer  
Environment  
**Monaghan County Council**  
The Glen, Monaghan  
Co Monaghan

**Tel** +353 47 30592  
**Fax** +353 47 82739  
**Email** [environ@monaghancoco.ie](mailto:environ@monaghancoco.ie)  
**Website** [www.monaghan.ie](http://www.monaghan.ie)  
**Litter Hotline** 1800 200 014



Administrative Officer  
Environment Section  
**North Tipperary  
County Council**  
Civic Offices, Limerick Road  
Nenagh, Co Tipperary

**Tel** +353 67 44786

**Fax** +353 67 32260

**Email** environment@  
northtippcoco.ie

**Website** www.tipperarynorth.ie

**Litter Hotline** 1800 250 350

Environmental Services  
**Offaly County Council**

Áras an Chontae  
Tullamore, Co Offaly

**Tel** +353 57 9346895

+353 57 9346800

**Out of Hours** 1890 750 750

**Fax** +353 57 9329230

**Email** environment@offalycoco.ie

**Website** www.offaly.ie

**Environment Hotline** 1800 242 673

Environmental Complaints  
Coordinator  
Environment Section  
**Roscommon County Council**  
Roscommon West Business Park  
Circular Road  
Roscommon

**Tel** +353 90 6637261

**Fax** +353 90 6634443

**Email** environment@  
roscommoncoco.ie

**Website** www.roscommoncoco.ie

**Litter Hotline** 1850 548 837

Environment Complaints Officer  
**Sligo County Council**

Unit 9

Cleveragh Business Park

Sligo

**Tel** +353 71 9111902

**Fax** +353 71 9111924

**Email** enviro@sligococo.ie

**Website** www.sligococo.ie

Environmental Services  
Department

**South Dublin County Council**

County Hall, Town Centre

Tallaght, Dublin 24

**Tel** +353 1 4149000

**Fax** +353 1 4149261

+353 1 4149101

**Email** cccounter@sdblincoco.ie

**Website** www.southdublin.ie

Administrative Officer  
Environment Section  
**South Tipperary County  
Council**

Old Museum  
Parnell Street, Clonmel  
Co Tipperary

**Tel** +353 52 34455

**Out of Hours** 1800 202 627

**Fax** +353 52 34391

**Email** environ@southtippcoco.ie

**Website** www.southtippcoco.ie

**Litter Hotline** 1800 202 627

Environmental Complaints  
Coordinator

Environmental Services  
**Waterford City Council**

Wallace House, Maritana Gate  
Canada Street, Waterford

**Tel** +353 51 849868

**Out of Hours** +353 51 875555

**Fax** +353 51 849530

**Email** envionservices@  
waterfordcity.ie

**Website** www.waterfordcity.ie

Environmental Complaints  
Coordinator  
Environmental Enforcement Office  
**Waterford County Council**

Civic Offices  
Dungarvan, Co Waterford

**Tel** +353 58 22000

+353 58 21113

**Out of Hours** +353 58 22000

**Fax** +353 58 20889

**Email** environmentalcomplaints@  
waterfordcoco.ie

**Website** www.waterfordcoco.ie

**Litter Hotline** 1800 201 501

Senior Engineer  
Environment Section  
**Westmeath County Council**

Bishopsgate Street  
Mullingar  
Co Westmeath

**Tel** +353 44 9332169

**Out of Hours** +353 44 9332000

**Fax** +353 44 9384239

**Email** mconnolly@  
westmeathcoco.ie

**Website** www.westmeathcoco.ie

**Litter Hotline** 1890 320 005

PART



# Directory of Regional Agencies

LOCAL AUTHORITIES

'DUMP THE DUMPERS'

EPA REGIONAL OFFICES

ENFO

HEALTH SERVICE  
EXECUTIVE

## Local Authorities contd

Environmental Complaints

Coordinator

Environment Enforcement

**Wexford County Council**

County Hall

Wexford

**Tel** 1800 767 848

+353 53 9176619

**Out of Hours** 1890 666 777

**Fax** +353 53 9147748

**Email** [environment.enforcement@wexfordcoco.ie](mailto:environment.enforcement@wexfordcoco.ie)

**Website** [www.wexford.ie](http://www.wexford.ie)

Senior Executive Officer

Water & Environmental

Services Section

**Wicklow County Council**

County Buildings

Wicklow Town

**Tel** +353 404 20296

**Fax** +353 404 67792

**Email** [envser@wicklowcoco.ie](mailto:envser@wicklowcoco.ie)

**Website** [www.wicklow.ie](http://www.wicklow.ie)

**Litter Hotline** 1890 548 837

## 'Dump the Dumpers' LoCall 1850 365 121

Members of the public can report large scale illegal dumping via a 24 hour local telephone number 1850 365 121. This confidential telephone service is designed to encourage reporting of large scale illegal dumping of waste or of abandoned illegal dumps.

Local authorities, An Garda Síochána and the EPA will follow up on the information provided by the public, as appropriate.

## EPA Regional Offices

Members of the public who wish to make a complaint to the EPA under Part A, Step Three of this leaflet should complete the relevant complaint form on the EPA website, [www.epa.ie](http://www.epa.ie).

### Headquarters South East Region

Environmental Protection Agency  
PO Box 3000  
Johnstown Castle Estate  
Wexford

**Tel** +353 53 9160600  
**LoCall** 1890 33 55 99  
**Fax** +353 53 91606 99  
**Email** [info@epa.ie](mailto:info@epa.ie)  
**Website** [www.epa.ie](http://www.epa.ie)

### East/North East Region

Environmental Protection Agency  
McCumiskey House  
Richview, Dublin 14

**Tel** +353 1 2680100  
**LoCall** 1890 33 55 99  
**Fax** +353 1 2680199  
**Email** [info@epa.ie](mailto:info@epa.ie)  
**Website** [www.epa.ie](http://www.epa.ie)

### South/South West Region

Environmental Protection Agency  
Inniscarra, Co Cork

**Tel** +353 21 4875540  
**LoCall** 1890 33 55 99  
**Fax** +353 21 4875545  
**Email** [info@epa.ie](mailto:info@epa.ie)  
**Website** [www.epa.ie](http://www.epa.ie)

### West/North West Region

Environmental Protection Agency  
John Moore Road  
Castlebar, Co Mayo

**Tel** +353 94 9048400  
**LoCall** 1890 33 55 99  
**Fax** +353 94 9048499  
**Email** [info@epa.ie](mailto:info@epa.ie)  
**Website** [www.epa.ie](http://www.epa.ie)

### OEE Public Authority Enforcement

Environmental Complaints Unit  
Office of Environmental Enforcement  
Environmental Protection Agency  
PO Box 3000  
Johnstown Castle Estate  
Co Wexford

**Tel** +353 53 9160600  
**LoCall** 1890 33 55 99  
**Fax** +353 53 9160699  
**Email** [info@epa.ie](mailto:info@epa.ie)  
**Website** [www.epa.ie](http://www.epa.ie)

## ENFO

ENFO is the environmental information service of the Department of the Environment, Heritage and Local Government.

### ENFO

17 St Andrew Street  
Dublin 2

**Tel** 1890 200 191  
+353 1 8882001  
**Fax** +353 1 8883946  
**Email** [info@enfo.ie](mailto:info@enfo.ie)  
**Website** [www.enfo.ie](http://www.enfo.ie)

## Health Service Executive

The Health Service Executive (HSE) is responsible for dealing with complaints about public health matters. If you have a concern about impacts of an activity or incident on your own health, the health of your family or the health of the wider community, contact the Health Services Executive so that public health issues can be investigated.

### Health Service Executive (HSE) Head Office

Oak House  
Millennium Park  
Naas, Co Kildare

**Tel** +353 45 880400  
**Fax** 1890 200 893  
**Website** [www.hse.ie](http://www.hse.ie)

PART



# Directory of Regional Agencies

REGIONAL FISHERIES  
BOARDS

NATIONAL PARKS AND  
WILDLIFE SERVICE

AN GARDÁ SÍOCHÁNA

HEALTH & SAFETY  
AUTHORITY

FOOD SAFETY AUTHORITY  
OF IRELAND

## Regional Fisheries Boards

The Regional Fisheries Boards are statutory bodies mainly responsible for aquatic life forms and the fish habitat.

They investigate complaints about fish kills and water pollution matters, including pollution arising from Local Authority Works and are also interested in any activity that impacts on waters such as dredging, gravel removal, bridge construction etc.

### Central Fisheries Board

Swords Business Campus  
Swords, Co Dublin

**Tel** +353 1 8842600

**Fax** +353 1 8360060

**Email** [info@cfb.ie](mailto:info@cfb.ie)

**Website** [www.cfb.ie](http://www.cfb.ie)

### Eastern Regional Fisheries Board

15A Main Street  
Blackrock, Co Dublin

**Tel** +353 1 2787022

**Fax** +353 1 2787025

**Email** [info@erfb.ie](mailto:info@erfb.ie)

**Website** [www.fishingireland.net](http://www.fishingireland.net)

### Northern Regional Fisheries Board

Station Road, Ballyshannon  
Co Donegal

**Tel** +353 71 9851435

**Fax** +353 71 9851815

**Email** [info@nrfb.ie](mailto:info@nrfb.ie)

**Website** [www.nrfb.ie](http://www.nrfb.ie)

### North Western Regional Fisheries Board

Ardnaree House  
Abbey Street  
Ballina, Co Mayo

**Tel** +353 96 9022788

**Fax** +353 96 9070543

**Email** [info@nwrfb.com](mailto:info@nwrfb.com)

**Website** [www.northwestfisheries.ie](http://www.northwestfisheries.ie)

### Shannon Regional Fisheries Board

Ashbourne Business Park  
Dock Road  
Limerick

**Tel** +353 61 300238

**Fax** +353 61 300308

**Email** [info@shrfb.com](mailto:info@shrfb.com)

**Website** [www.shannon-fishery-board.ie](http://www.shannon-fishery-board.ie)

### Southern Regional Fisheries Board

Epworth, Anglesea Street  
Clonmel  
Co Tipperary

**Tel** +353 52 80055

**Fax** +353 52 23971

**Email** [enquiries@srfb.ie](mailto:enquiries@srfb.ie)

**Website** [www.srfb.ie](http://www.srfb.ie)

### South Western Regional Fisheries Board

Sunnyside House  
Macroom, Co Cork

**Tel** +353 26 41222

**Fax** +353 26 41223

**Email** [swrfb@swrfb.ie](mailto:swrfb@swrfb.ie)

**Website** [www.swrfb.com](http://www.swrfb.com)

### Western Regional Fisheries Board

The Weir Lodge  
Earl's Island  
Galway

**Tel** +353 91 563110

**Fax** +353 91 566335

**Email** [info@wrfb.ie](mailto:info@wrfb.ie)

**Website** [www.wrfb.ie](http://www.wrfb.ie)

## National Parks and Wildlife Service – Department of Environment, Heritage & Local Government

The National Parks and Wildlife Service, part of the Department of Environment, Heritage & Local Government is responsible for investigating complaints about wildlife and habitat protection matters.

### National Parks & Wildlife Service

7 Ely Place  
Dublin 2

**Tel** +353 1 8882000

**Fax** +353 1 8883272

**Email** natureconservation@environ.ie

**Website** www.npws.ie

## An Garda Síochána

An Garda Síochána should be contacted where you have concerns that a criminal offence has been committed.

## Health & Safety Authority

The Health & Safety Authority is responsible for securing health and safety at work.

### Health & Safety Authority

The Metropolitan Building  
James Joyce Street  
Dublin 1

**Tel** 1890 289 389

**Fax** +353 1 6147020

**Email** wcu@hsa.ie

**Website** www.hsa.ie

## Food Safety Authority of Ireland

The Food Safety Authority of Ireland aims to protect consumers' health and consumers' interests by ensuring that food consumed, distributed, marketed or produced in the state meets the highest standards of food safety and hygiene.

### Food Safety Authority of Ireland

Abbey Court  
Lower Abbey Street  
Dublin 1

**Tel** +353 1 8171300

**Fax** +353 1 8171301

**Email** info@fsai.ie

**Website** www.fsai.ie

PART



## Directory of Regional Agencies

RADIOLOGICAL  
PROTECTION INSTITUTE  
OF IRELAND (RPII)

DEPARTMENT OF  
AGRICULTURE & FOOD

EU COMMISSION

### Radiological Protection Institute of Ireland (RPII)

The Radiological Protection Institute of Ireland (RPII) is the national organisation with regulatory, monitoring and advisory responsibilities concerning ionising radiation and radioactive contamination in the environment.

#### **Radiological Protection Institute of Ireland**

3 Clonskeagh Square  
Clonskeagh Road  
Dublin 14

**Tel** +353 1 2697766

**Fax** +353 1 2697437

**Email** [rpil@rpil.ie](mailto:rpil@rpil.ie)

**Website** [www.rpil.ie](http://www.rpil.ie)

### Department of Agriculture & Food

The Department of Agriculture and Food is responsible for overseeing single-farm payments to farmers, which are subject to cross-compliance with environmental directives. The Department carries out inspections to meet EU requirements and arrangements for cross reporting with other control authorities are being put in place.

#### **Department of Agriculture & Food**

Agriculture House  
Kildare Street  
Dublin 2

**Tel** +353 1 6072000

**Local** 1890 200 510

**Email** [info@agriculture.gov.ie](mailto:info@agriculture.gov.ie)

**Website** [www.agriculture.gov.ie](http://www.agriculture.gov.ie)

### EU Commission

The European Commission is responsible for ensuring that Community law is applied properly in the Member States.

Anyone may lodge a complaint with the Commission against a Member State about any measure (law, regulation or administrative action) or practice, which they consider incompatible with a provision or a principle of Community law. It may be appropriate before contacting the European Commission to first ensure that the National Authorities are sufficiently informed about and given an opportunity to respond to a potentially unsatisfactory situation complained about. Standard complaint forms are available on the website of the European Commission [www.ec.europa.eu](http://www.ec.europa.eu)

Alternatively, a complaint may also be sent by ordinary letter. Such complaints should be sent to the following address:

#### **Commission of the European Communities**

(for the attention of  
the Secretary-General)  
B-1049 Brussels  
Belgium



Produced through the  
Environmental Enforcement  
Network by the Environmental  
Protection Agency, County  
and City Managers Association  
and the Department of  
Environment, Heritage &  
Local Government.